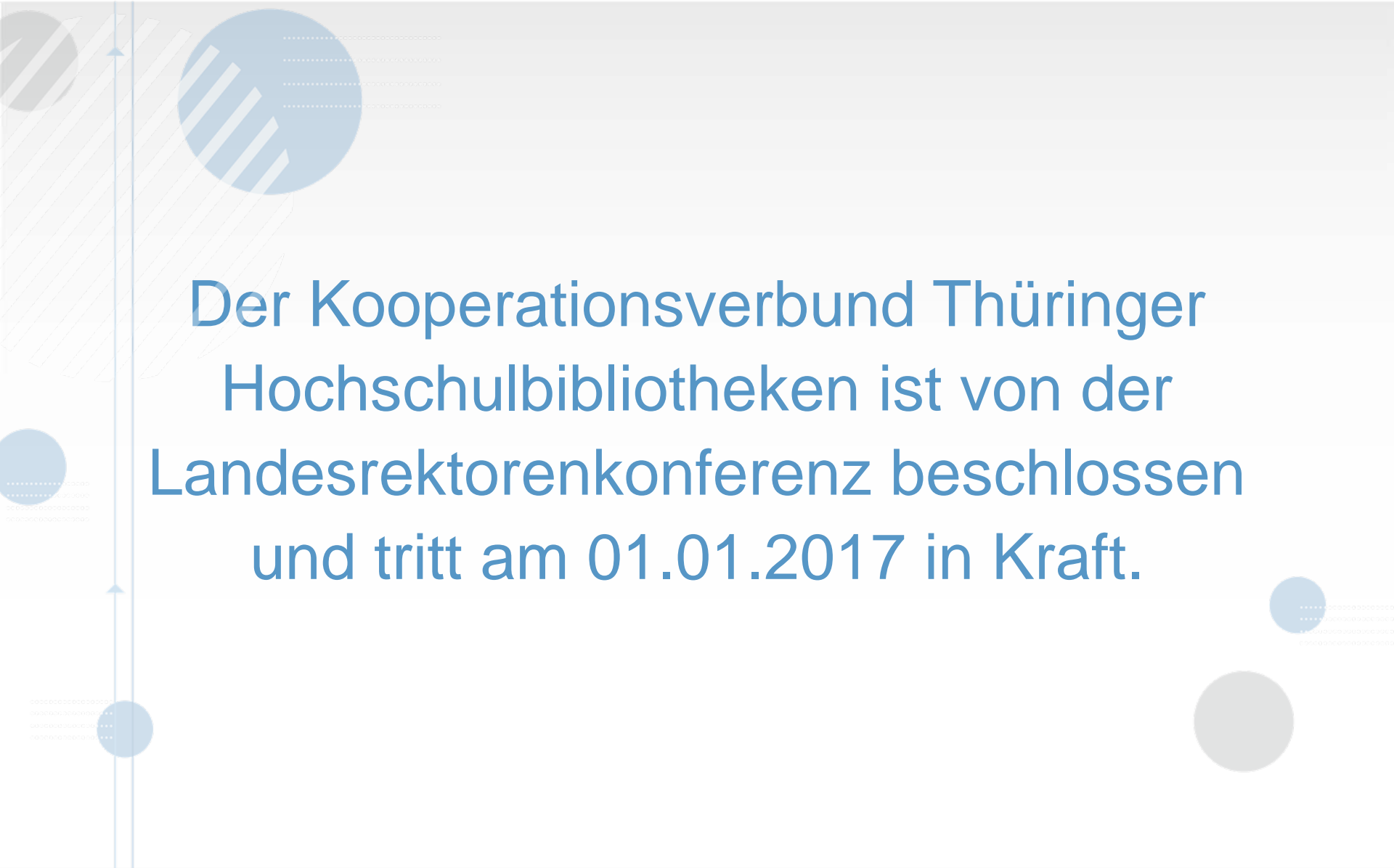
The left side of the slide features several decorative elements: a vertical blue line with two upward-pointing arrows, a large blue circle with diagonal white stripes, a smaller blue circle with horizontal white stripes, and a grey circle with diagonal white stripes. There are also several smaller blue circles scattered throughout the slide.

Kooperationsverbund Thüringer Hochschulbibliotheken: die Regelungen der Hochschulen von Sabine Wefers

Sektion 4 : Herbstsitzung 2016

The right side of the slide features two decorative circles: a small blue circle with horizontal white stripes and a larger grey circle.

The background of the slide is light gray with several decorative elements. On the left side, there is a vertical blue line with two upward-pointing arrows. There are several blue circles of different sizes and patterns: one with diagonal stripes, one with horizontal dashed lines, and one with a solid blue fill. On the right side, there are two more circles, one with horizontal dashed lines and one with a solid gray fill. The main text is centered in a large, blue, sans-serif font.

Der Kooperationsverbund Thüringer
Hochschulbibliotheken ist von der
Landesrektorenkonferenz beschlossen
und tritt am 01.01.2017 in Kraft.

Strukturen und deren Konsequenzen

The background features several decorative elements: a vertical blue line on the left with upward-pointing arrows, a large blue circle with diagonal stripes in the upper left, a smaller blue circle with horizontal stripes in the lower left, a small blue circle with horizontal stripes in the lower right, and a large grey circle in the bottom right. There are also faint horizontal lines and dotted patterns scattered across the page.


Der Kooperationsverbund ist
zweistufig und aufgabenzentriert.

Stufe 1:

Hochschulbibliothekszentren in
Jena, Erfurt/Nordhausen,
Ilmenau/Schmalkalden, Weimar

Aufgabe:

Lokale Zusammenarbeit, z. B.
der ThULB und der Bibliothek
der EAH Jena

The background of the slide is light gray with several decorative elements. On the left side, there is a vertical blue line with two upward-pointing arrows. To the left of this line are several blue circles of different sizes, some with diagonal hatching. On the right side, there are also several blue circles, some with diagonal hatching, and one larger gray circle at the bottom right. The main text is centered in a large, blue, sans-serif font.

Die Gestaltung der Zusammenarbeit
der Hochschulbibliothekszentren
ist den beteiligten Hochschulen
freigestellt.

Stufe 2:

Das kooperative
Bibliotheksservicecenter (BSC),
bestehend aus zwei BSC-Units,
der ThULB und der UB Ilmenau

Aufgabe:

Die Wahrnehmung sämtlicher
hochschulübergreifender Aufgaben

Aufgabenfelder BSC:

1. Erwerbungsmanagement für elektronische Informationsprodukte

The slide has a light gray background with decorative elements. On the left, there is a vertical blue line with upward-pointing arrows and several blue circles of different sizes, some with diagonal hatching. On the right, there are more blue circles, one with a hatched pattern and another solid gray one. The main text is centered in a blue and gray color scheme.

Aufgabenfelder BSC:

2. IT-Infrastruktur und technische Innovationen

The slide features a light gray background with several decorative elements. On the left side, there is a vertical blue line with two upward-pointing arrows. To the left of this line are several circles of different sizes and colors (blue, gray, and white with diagonal stripes). Some of these circles have horizontal dotted lines extending from their right sides. On the right side, there are more circles, including a large gray one and a smaller blue one with horizontal dotted lines. The main text is centered in the middle of the slide.

Aufgabenfelder BSC:

3. Fortbildung und rechtliche Beratung

Aufgabenverteilung:

Die Felder 1 und 2 nehmen die ThULB und die UB Ilmenau verteilt wahr; das dritte Feld die UB Ilmenau.

Finanzierung:

Die BSC-Units erledigen die Aufgaben aus den eigenen Ressourcen heraus.

Steuerung der BSC-Units:

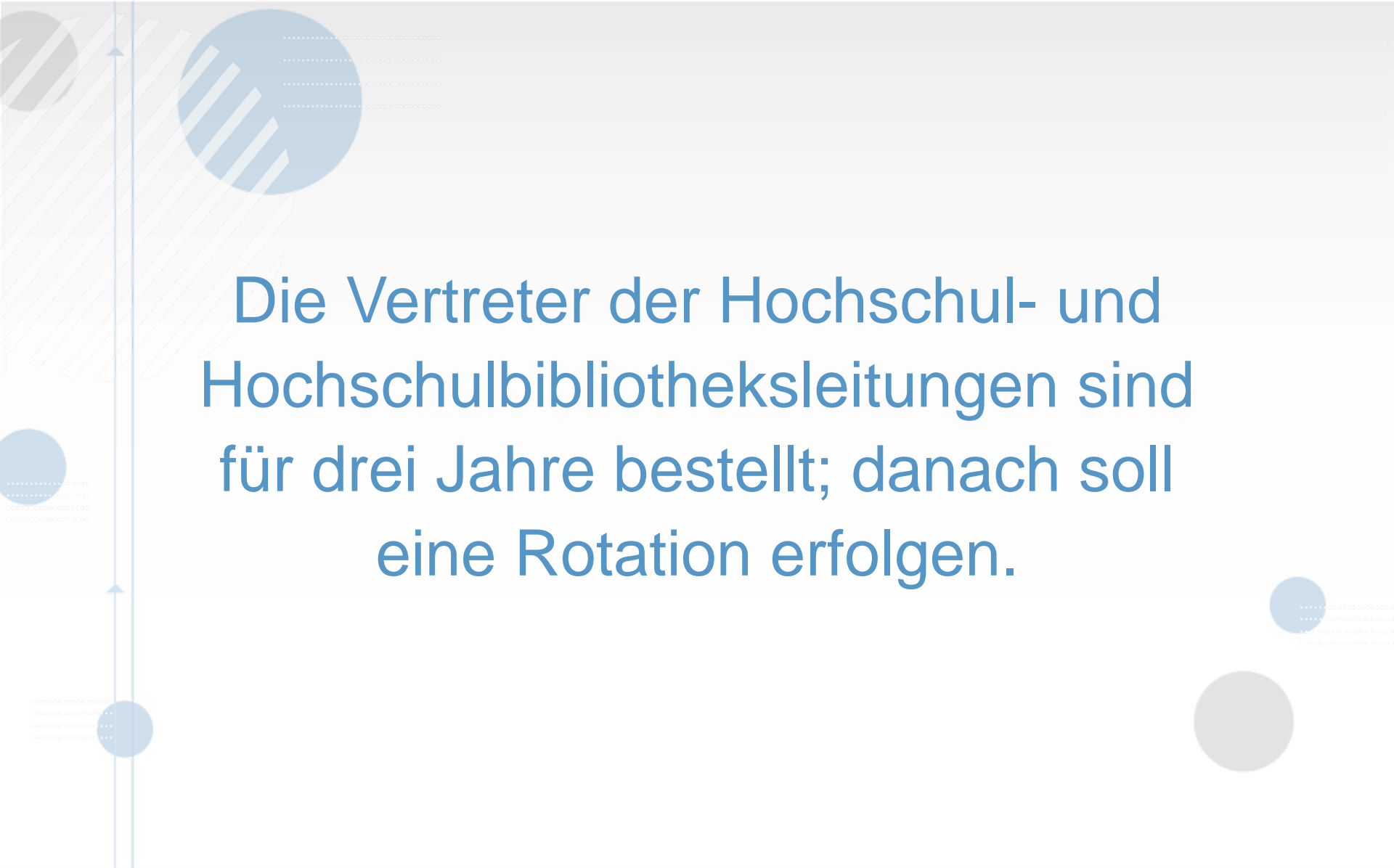
Die Koordination, Begleitung und Aufsicht, Festlegung der strategischen Ziele und die Aufgabenpriorisierung obliegt dem Verwaltungsrat.

Zusammensetzung Verwaltungsrat:

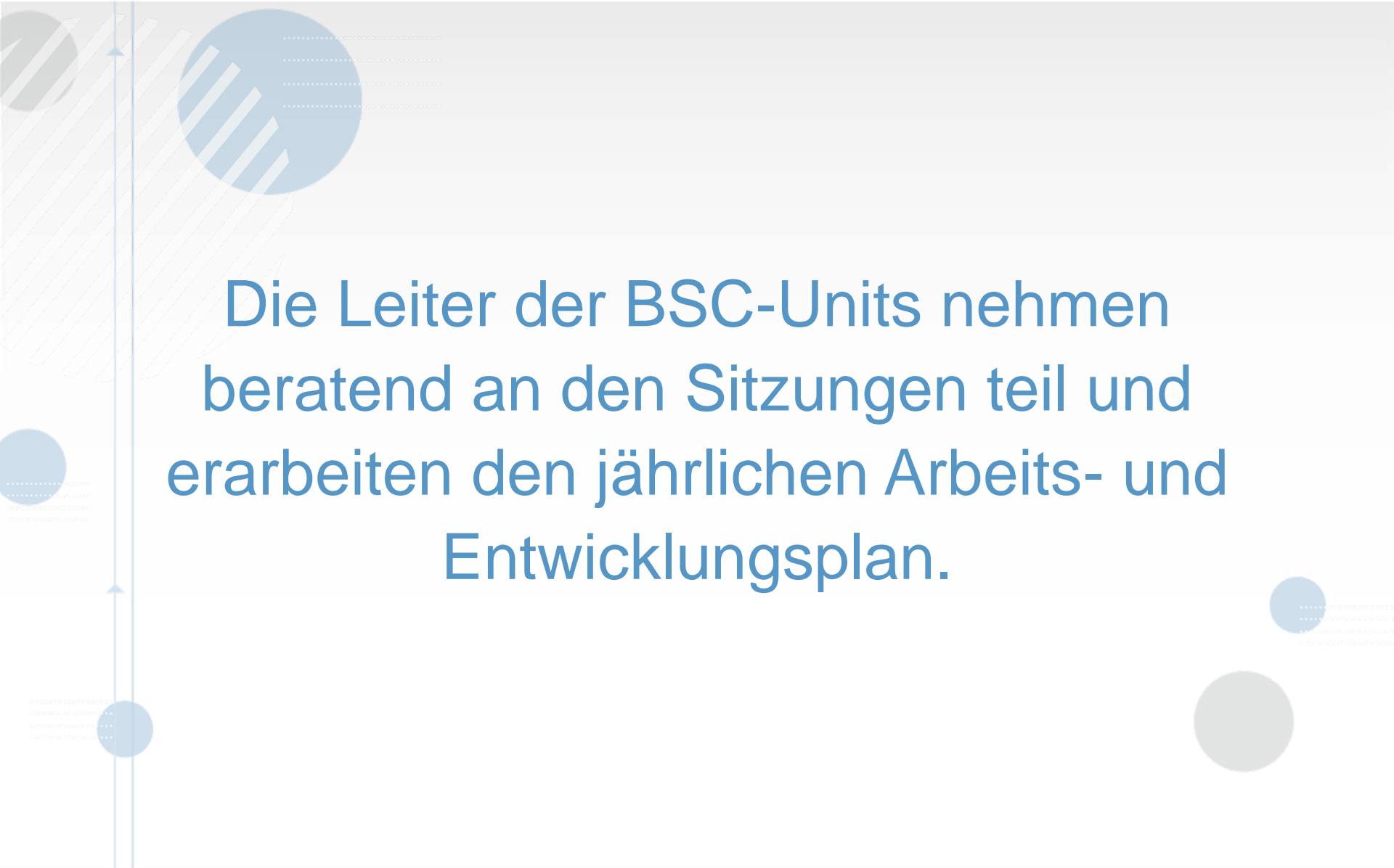
- Je ein Mitglied der Hochschulleitungen der Hochschulbibliothekszentren

Zusammensetzung Verwaltungsrat:

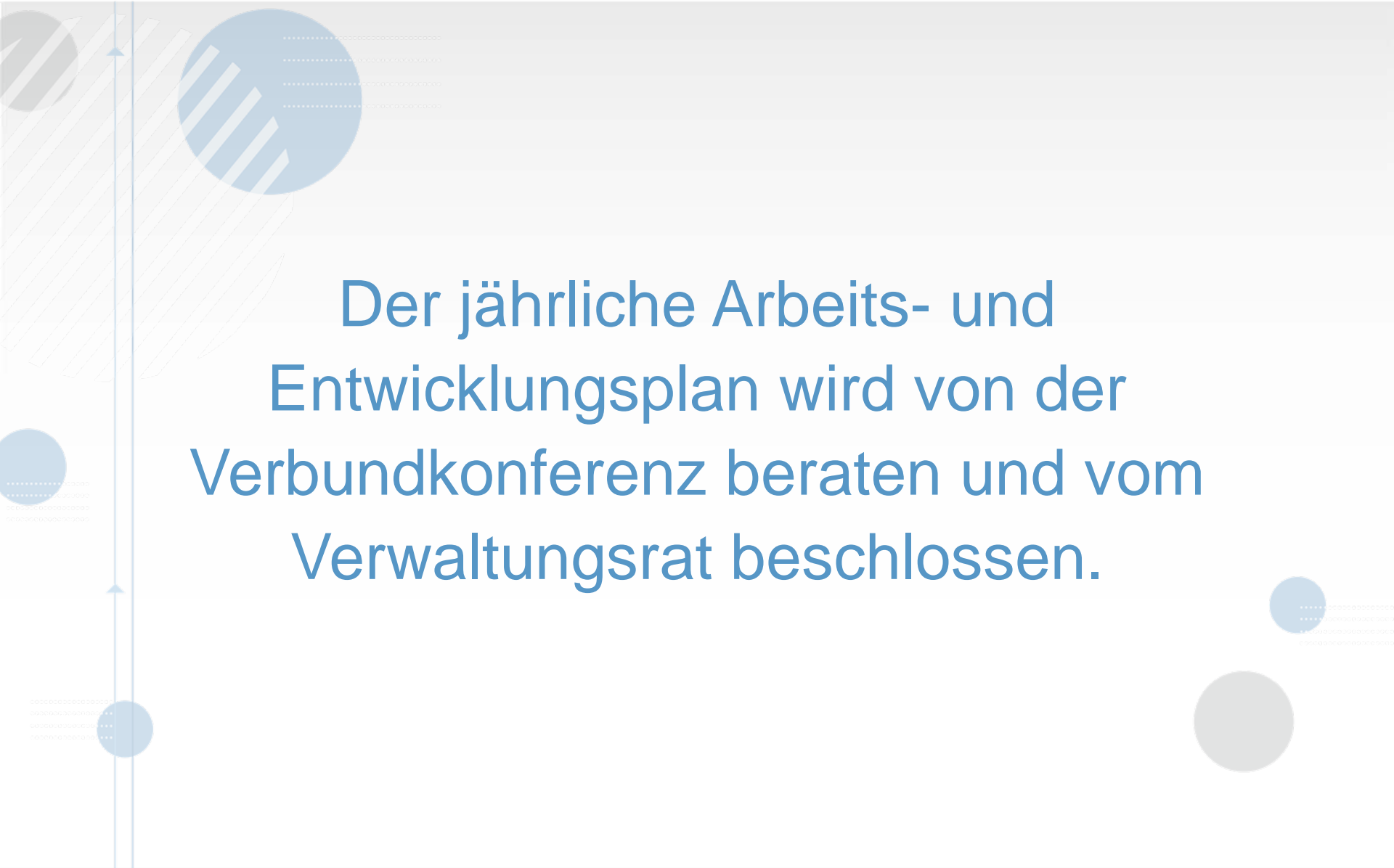
- ein Ministeriumsvertreter
- Je ein Hochschulbibliotheksleiter
UB / FH

The background of the slide is light gray with several decorative elements. On the left side, there is a vertical blue line with two upward-pointing arrows. To the left of this line are several blue circles of different sizes, some with diagonal hatching. On the right side, there are also several blue circles of different sizes, some with diagonal hatching. The text is centered in a large, blue, sans-serif font.

Die Vertreter der Hochschul- und Hochschulbibliotheksleitungen sind für drei Jahre bestellt; danach soll eine Rotation erfolgen.

The background of the slide is light gray with several decorative elements. On the left side, there is a vertical blue line with two upward-pointing arrows. There are several blue circles of different sizes and patterns: one with diagonal stripes, one with horizontal stripes, and one with a dotted pattern. On the right side, there are two more blue circles, one with a dotted pattern and one solid gray circle. The text is centered in a blue, sans-serif font.

Die Leiter der BSC-Units nehmen beratend an den Sitzungen teil und erarbeiten den jährlichen Arbeits- und Entwicklungsplan.

The background of the slide is light gray with several decorative elements. On the left side, there is a vertical blue line with two upward-pointing arrows. To the left of this line are several blue circles of different sizes, some with diagonal hatching. On the right side, there are also blue circles, one of which is larger and has a gray shadow. The main text is centered in a blue, sans-serif font.

Der jährliche Arbeits- und
Entwicklungsplan wird von der
Verbundkonferenz beraten und vom
Verwaltungsrat beschlossen.

Verbundkonferenz:

- alle Hochschul- und Hochschulbibliotheksleitungen,
- die Vorsitzenden der Bibliotheksausschüsse

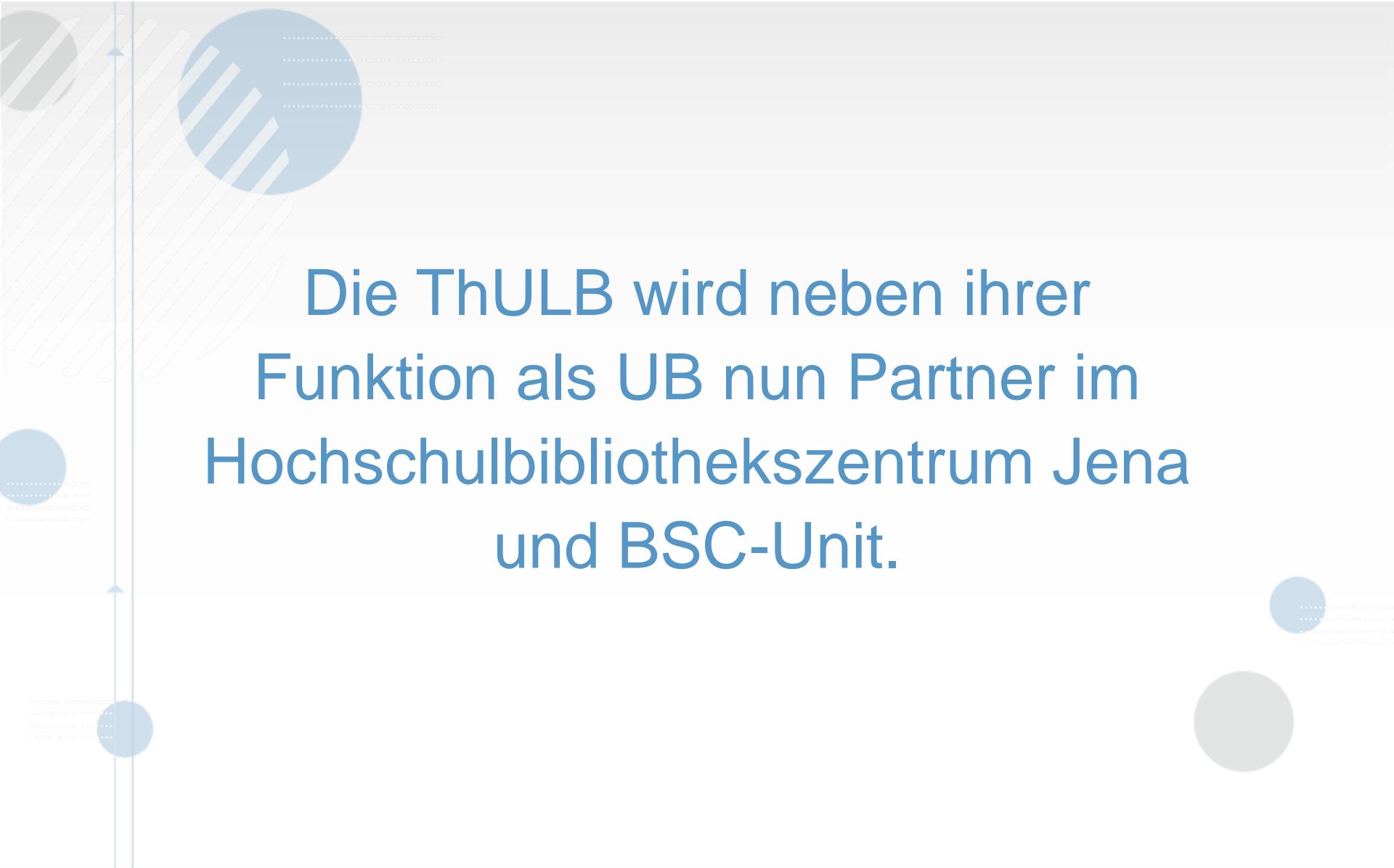
Verbundkonferenz:

- Je ein Bibliotheksbeauftragter der Hochschulen
- Vertreter der Ministerien für Wissenschaft und Kultur


Verbundkonferenz:

- Vertreter des Hauptpersonalrats
- Externe Experten

Was bedeutet das für die ThULB?

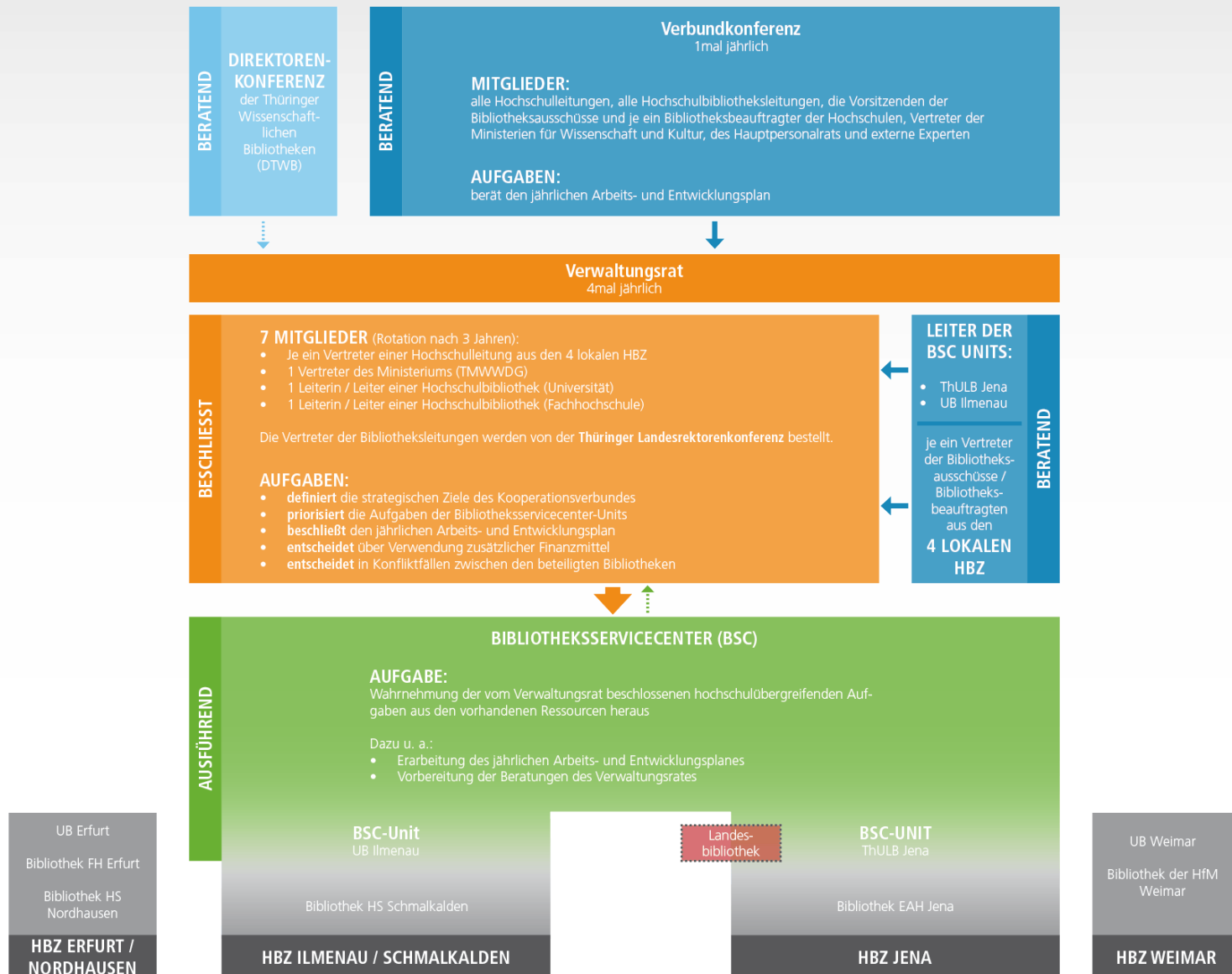
The background features several decorative elements: a vertical blue line on the left with upward-pointing arrows, a large blue circle with diagonal stripes in the upper left, and several smaller blue and grey circles scattered throughout. There are also some faint, illegible text fragments in the background.

Die ThULB wird neben ihrer
Funktion als UB nun Partner im
Hochschulbibliothekszenrum Jena
und BSC-Unit.

The slide features a light blue background with several decorative elements. On the left side, there is a vertical line with an upward-pointing arrow. To the right of this line are several circles of different sizes and colors (blue, grey, and white with diagonal stripes). Some of these circles have horizontal dotted lines extending from their right sides. The text is centered on the slide in a blue, sans-serif font.

Die ThULB bleibt zudem
Landesbibliothek.

In welchem Umfang und mit
welchen Aufgaben wird von
der Universitätsleitung mit
dem Ministerium verhandelt.



A decorative graphic on the left side of the slide. It features several vertical blue lines of varying thicknesses. Interspersed among these lines are various circular elements: solid blue circles, solid grey circles, and circles with diagonal hatching. Some circles are partially overlapping. There are also small blue arrows pointing up and down along the vertical lines. A horizontal dotted line is visible near the top left.

Danke für Ihre Aufmerksamkeit!